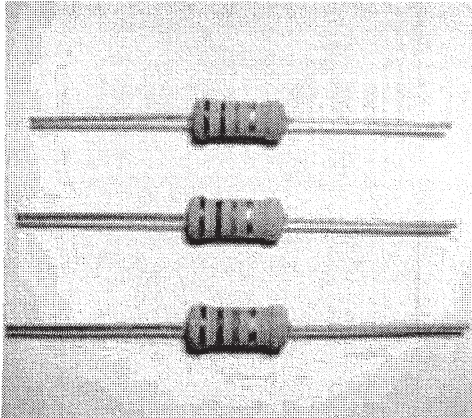


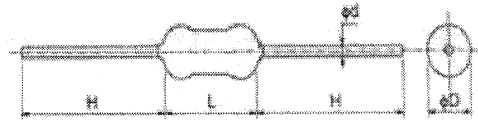
RT METAL GLAZE HIGH VOLTAGE RESISTORS



金屬釉高壓電阻器



DIMENSIONS 尺寸



Unit: mm

TYPE	Dimension(mm)				Resistance Range(Ω)	Max, Permissible Voltage	
	D ± 1	L ± 1	H ± 3	d ± 0.1		DC	RMS
RT 1/4W	2.4 ± 0.5	6.4	28	0.6	47K~33M	1600V	1150V
RT 1/2W	3.5	9	28	0.65	47K~33M	3500V	2500V
RT 1W	4.5	11	28	0.8	47K~33M	5000V	3500V
RT 2W	5.0	15	28	0.8	47K~33M	10000V	7000V

Features

1. Similar characteristic with metal film but resistance value can be as high as 33MΩ
2. Metal-glaze elements provide high stable performance against environmental conditions and overload
3. Resistant to heat, humidity & solvents
4. Resistance tolerance: ±5% & ±1%

特性

- 接近金屬皮膜特性，阻值可高達33MΩ
- 使用高穩定性金屬釉作基體，耐溫度及超負載、性能安定
- 可耐溶劑清洗及適高溫環境
- 產品精密，容許誤差為 ± 5 % 及 ± 1 %

HOW TO ORDER 訂貨方式

RT	IW	10M Ω	J	T/B
a	b	c	d	e

- common code for metal glaze high voltage resistors
- rated power
- resistance value
- tolerance (J: ±5%)
- package

- 名稱
- 額定電力
- 電阻值
- 容許誤差
- 包裝方式

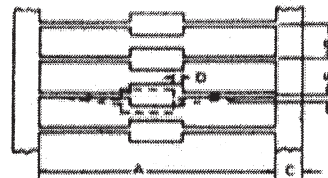
T/R: tape & reel
T/B: tape in box
Nil: bulk

Rated Continuous Working Voltage(RCWV) shall be determined from $RCWV = \sqrt{\text{Rated Power} \times \text{Resistance Value}}$ or Max. Working Voltage listed above, whichever less.

Note:

- Too low or too high ohmic values can be supplied only case by case
- RT1W & RT2W are coated by flameproof paint
- UL approval : RT1/2W, RT1W, RT2W series (960Kohm-12Mohm)

TAPE TYPE DIMENSION



Unit: mm

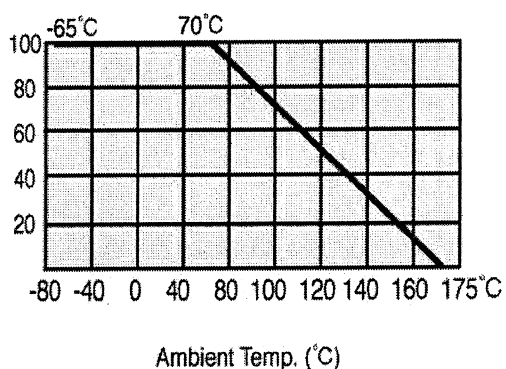
Wattage	Size Type	A	B	C ± 1	D Max	E Max
≤ 1/2W	T-52	52 ± 1	5 ± 0.5	6	0.6	1.2
1W	T-63	63 ± 1	5 ± 0.5	6	0.6	1.2
2W	T-63	63 ± 1	10 ± 1	6	0.6	1.2
	T-76	76 ± 1.5	10 ± 1	6	0.6	1.2

Resistor Technology

ELECTRICAL PERFORMANCE 電氣特性

DERATING CURVE 電力遞減曲線

For resistors operated in ambient temperatures above 70°C, power rating must be derated in accordance with the curve below.



Test Items	Condition	Spec.	Test Method	Rated Load(%)
			JIS-C5202	
溫度係數 Resistance Temp. Coeff.	-65°C~+175°C	±200ppm/°C	5.2	
絕緣電阻 Insulation Resistance	500V megger	1,000MΩ min.	5.6	
耐電壓 Dielectric Withstanding	350V AC 1 min.	No Change	5.7	
耐濕壽命 Moisture-proof Load Life	40°C 95% RH on-off cycle 500 hours	±3%	7.9	
溫度週率 Temperature Cycle	-65°C,25°C,150°C,25°C, 5 cycles	±0.5%	7.4	
低溫使用 Low Temp. Oper.	-65°C Rated Voltage 45 minutes	±0.5%	-	
短時超負載 Short Time Overload	2.5 times of rated voltage for 5 sec.	±1%	5.5	
負載壽命 Load Life	70°C on-off cycles 1,000 hours	±3%	7.10	
浸錫耐熱性 Resistance to Soldering Heat	270°C±5°C/10 ±1 sec.	±1%	6.4	